

Ready Access Portal Software

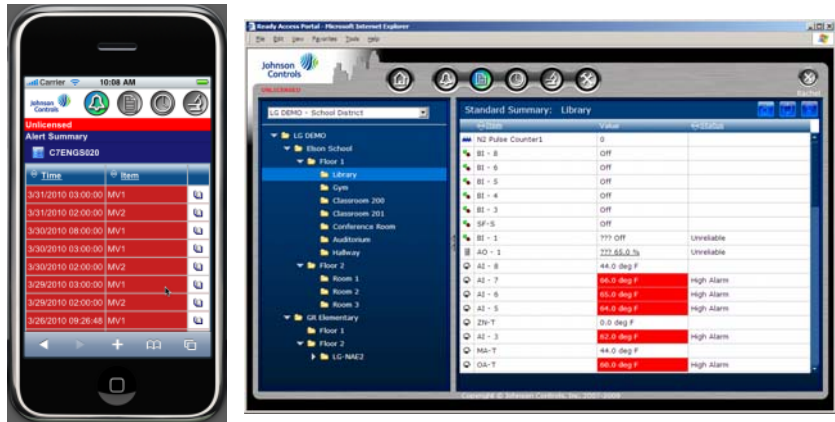
Description

The Ready Access Portal software provides a natural, complementary extension of the Metasys® Site Management Portal User Interface (UI). The Ready Access Portal UI provides an intuitive, task-based interface that can be tailored to meet the needs of building tenants and other specialized users. Available on a computer or handheld platform, the Ready Access Portal UI requires only a Web browser.

Refer to the *Ready Access Portal Software Installation Instructions (LIT-12011523)* and the *Ready Access Portal Help (LIT-12011342)* for details.

Features

- Intuitive user interface to key Metasys system functions and tasks
- Access to alarm, summary, schedule, and trend data
- Flexible UI focus based on security privileges, Dashboard assignment, and user views
- Support for up to 100 concurrent users (if Ready Access Portal is installed on a stand-alone computer without Extended Application and Data Server [ADX])
- Secure Sockets Layer (SSL) support



Ready Access Portal UI in a Handheld Device (Left) and Computer Window (Right)

Selection Chart

Code Number ¹	Description
MS-RAP-0	Ready Access Portal software; System Configuration Tool (SCT) and Metasys Export Utility included
MS-RAP-6	Ready Access Portal software (upgrade); SCT, Metasys Export Utility, and all supervisory engine images included (excluding NxE850)

1. Ready Access Portal software also ships with Application and Data Server (ADS)/ADX software. Refer to the *Application and Data Server (ADS/ADX) Product Bulletin (LIT-1201525)* for ADS/ADX code numbers.

Technical Specifications

Ready Access Portal Software ¹	
Metasys System Site Director Requirements	The Metasys Site Director: <ul style="list-style-type: none"> • must be at the same release version as the Ready Access Portal software • can be any Metasys system device with Site Director status: ADS/ADX, Network Automation Engine (NAE)/Network Integration Engine (NIE) 85, NAE55/NIE55, NIE59, NAE45, NAE35, or Network Control Engine (NCE) 25
Supported Operating Systems and Database Software for the Computer Running Ready Access Portal Software	The computer running the Ready Access Software can be one of the following five Operating System (OS) platforms: <ul style="list-style-type: none"> Microsoft® Windows® 7 OS Professional, Enterprise, or Ultimate (32-bit), (Includes Microsoft Internet Information Services [IIS] Version 7.5), .NET Framework Version 3.5.1, Supports Microsoft SQL Server™ 2005 Express with SP3 or SQL Server™ 2008 Express with SP1 Microsoft® Windows XP® OS Professional Edition with SP2 or SP3, (Includes Microsoft IIS Version 5.1), .NET Framework Version 3.5 SP1, Supports Microsoft SQL Server 2005 Express software with SP3 or SQL Server 2008 Express software with SP1 Note: SQL Server 2008 Express software with SP1 is supported on Windows XP OS with SP3 only. SQL Server 2008 Express is not supported on Windows XP OS with SP2. Microsoft Windows Vista™ OS Business Edition (32-bit) with SP2, (Includes Microsoft IIS Version 7.0), .NET Framework Version 3.5 SP1, Supports Microsoft SQL Server 2005 Express software with SP3 or SQL Server 2008 Express with SP1 Microsoft Windows Server 2008 OS (32-bit) with SP2, (Includes IIS Version 7.0), .NET Framework Version 3.5 SP1, Supports Microsoft SQL Server 2005 Standard and Enterprise Software with SP3 or SQL Server 2008 Standard and Enterprise software with SP1 Microsoft Windows Server 2003 OS (32-bit) with SP2, (Includes Microsoft IIS Version 6.0), .NET Framework Version 3.5 SP1, Supports SQL Server 2005 Standard or Enterprise software with SP3 or SQL Server 2008 Standard and Enterprise software with SP1 <p>Consider the following when choosing a computer for the Ready Access Portal software:</p> <ul style="list-style-type: none"> • The platform of the computer running Ready Access Portal software and the type of Site Director you have impact the number of users who can browse to the Ready Access Portal UI at the same time. • As a general rule, the computer running Ready Access Portal software should have the same or better processor speed and memory as the Site Director. • Ready Access Portal software can be installed on a stand-alone computer or a computer running ADS/ADX (Site Director only), SCT, or other Metasys system software. Ready Access Portal software is not supported on an NxE85.

Ready Access Portal Software (Continued)

Ready Access Portal Software ¹	
Web Browser Requirements for Ready Access Portal Client Computers and Handheld Devices	<p>Computer: The computer must be running Microsoft Internet Explorer® (IE) Web browser Version 6.x, 7.0, or 8.0. (We recommend IE 7.0.) Additionally, Microsoft Silverlight™ version 2.0 or later must be installed on each client computer if graphics are being used on the site.</p> <p>Handheld Device:</p> <ul style="list-style-type: none"> • The handheld device must be running Internet Explorer Mobile for Windows Mobile Version 5 or Version 6 OS; or Apple® iPhone® and iPod touch® OS Version 3.0 or greater. Other Web browsers may display the UI but the functionality is not guaranteed. • We recommend a screen size of at least 240 pixels wide by 320 pixels high (quarter Video Graphics Array [VGA]). The minimal width of 240 pixels is optimal for horizontal scrolling.

1. Ready Access Portal software does not support Metasys for Validated Environments (MVE), extended architecture, electronic signature or electronic signature annotation requirements. If you install Ready Access Portal software on an MVE site, use the appropriate operating procedures and user/role permissions to ensure that Ready Access Portal users have view only access to the system.